

# Free2Move eSolutions

Innovative technologies to lead the transition to electric mobility and charging freedom



## 48A / 11.5 kW Wall Mount EV AC Charger

### Key Features:

- Residential and Commercial EV Charging
- Wired/Wireless Connection for Central Management System
- 5-inch LCD Display (optional)
- Ergonomic and Modern Design
- Indoor/Outdoor Applications
- Input: 200Vac~240Vac
- Local Load Management
- Over the Air Technology



### Accessories:

<<< Pedestal



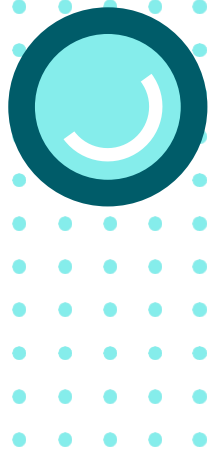
Available 5" LCD Display >>>



### Applications

- EV Dealer Workshops
- EV Infrastructure Operators and Service Providers
- Parking Garages
- Commercial Fleet Operators





# Free2Move eSolutions

Innovative technologies to lead the transition to electric mobility and charging freedom



## 48A / 11.5 kW Wall Mount EV AC Charger

| Power Specification |                     |                          |
|---------------------|---------------------|--------------------------|
| AC Input            | Input Rating        | Single Phase 200~240 Vac |
|                     | AC Input Connection | L1/L2/GND or L/N/PE      |
|                     | Max Input Current   | 48A                      |
|                     | Frequency           | 50Hz/60Hz                |
| DC Input            | Output Current      | 48A                      |
|                     | Output Power        | 11.5 kW (240 VAC*48A)    |

| User Interface and Control |  |
|----------------------------|--|
| Display                    | LED Pilot Lamp (standard), 5" LCD (optional)                       |
| User Authentication        | RFID (ISO/IEC 14443A/B, ISO/IEC 15693, FeliCa™, MIFARE), ISO 15118 |
| Meter                      | IC (1% Accuracy)   |

| Communication |                                    |
|---------------|------------------------------------|
| External      | LAN + Wi-Fi + 4G                   |
| Internal      | OCPP 1.6 JSON (upgradeable to 2.0) |

| Environmental         |                                 |
|-----------------------|---------------------------------|
| Operating Temperature | -30°C to 50°C (-22°F to +122°F) |
| Humidity              | <85% (RH) @ 50°C (+122°F)       |
| Altitude              | ≤ 2000m (6562ft)                |
| Enclosure Protection  | (IK/IP Level) NEMA Type 4       |
| Cooling Method        | Natural Cooling                 |

| Mechanical            |   |
|-----------------------|---|
| Dimension (W x D x H) | 295 mm x 158 mm x 505 mm (11.6 in x 6.2 in x 19.9 in) |
| Weight                | < 10kg (22.0 lbs.) with cable                         |
| Cable Length          | 5M (16.4 ft.) standard / 7m (23 ft.) optional         |

| Protection  |  |
|-------------|--|
| RCD / CCID  | CCID 20  |
| Input Side  | UVP, OVP, Surge Protection, Ground Fault                                   |
| Output Side | OCP, Control Pilot Fault, Residual Current Protection                      |
| Protocol    | OTP, Relay Welding Detection, CCID Self Test, MCU Function Fault Detection |

| Regulation             |   |
|------------------------|---|
| Certification          | UL 2594, UL 2231-1/2, CTEP, EnergyStar™ |
| Wireless Certification | FCC / IC                                |
| Charging Interface     | SAE J1772 Type 1 Plug                   |

