

Free2Move eSolutions

Innovative technologies to lead the transition to electric mobility and charging freedom



80A / 19.2 kW Wall Mount EV AC Charger

Key Features:

- Residential and Commercial EV Charging
- Wired/Wireless Connection for Central Management System
- 5-inch LCD Display (optional)
- Ergonomic and Modern Design
- Indoor/Outdoor Applications
- Input: 200Vac~240Vac
- Local Load Management
- Over the Air Technology



Accessories:

<<< Pedestal



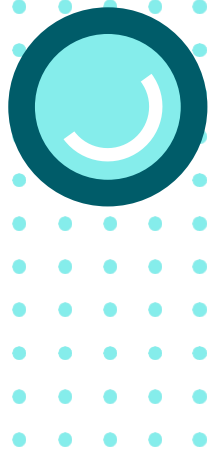
Available 5" LCD Display >>>



Applications

- EV Dealer Workshops
- EV Infrastructure Operators and Service Providers
- Parking Garages
- Commercial Fleet Operators





Free2Move eSolutions

Innovative technologies to lead the transition to electric mobility and charging freedom



80A / 19.2 kW Wall Mount EV AC Charger

Power Specification		
AC Input	Input Rating	Single Phase 200~240 Vac
	AC Input Connection	TN / TT
	Max Input Current	80A
	Frequency	50Hz/60Hz
DC Input	Output Current	80A
	Max. Output Current	120A@500V
	Max. Output Power	60 kW
	Voltage Accuracy	±2%
	Output Power	19.2 kW (240 VAC*80A)
User Interface and Control		
Display	LED Pilot Lamp (standard), 5" LCD (optional)	
User Authentication	RFID (ISO/IEC 14443A/B, ISO/IEC 15693, FeliCa™, MIFARE), ISO 15118	
Meter	IC (1% Accuracy)	
Communication		
External	LAN + Wi-Fi + 4G	
Internal	OCPP 1.6 JSON (upgradeable to 2.0)	
Environmental		
Operating Temperature	-30°C to 50°C (-22°F to +122°F)	
Humidity	<85% (RH) @ 50°C (+122°F)	
Altitude	≤ 2000m (6562ft)	
Enclosure Protection	(IK/IP Level) NEMA Type 4	
Cooling Method	Natural Cooling	
Mechanical		
Dimension (W x D x H)	295 mm x 158 mm x 505 mm (11.6 in x 6.2 in x 19.9 in)	
Weight	< 13kg (28.7 lbs.) with cable	
Cable Length	5M (16.4 ft.) standard / 7m (23 ft.) optional	
Protection		
RCD / CCID	CCID 20	
Input Side	UVP, OVP, Surge Protection, Ground Fault	
Output Side	OCP, Control Pilot Fault, Residual Current Protection	
Protocol	OTP, Relay Welding Detection, CCID Self Test, MCU Function Fault Detection	
Regulation		
Certification	UL 2594, UL 2231-1/2, CTEP, EnergyStar™	
Wireless Certification	FCC / IC	
Charging Interface	SAE J1772 Type 1 Plug	

